

**TECHNICAL MANUAL**

**DIRECT SUPPORT AND GENERAL SUPPORT MAINTENANCE**

**REPAIR PARTS AND SPECIAL TOOLS LISTS**

**(INCLUDING DEPOT MAINTENANCE REPAIR PARTS AND SPECIAL TOOLS)**

**FOR**

**TEST SETS, RADIO**

**TS-1588/AIC (NSN 6625-00-895-6646)**

**AND**

**TS-1588A/AIC (NSN 6625-00-239-6016)**

---

**HEADQUARTERS, DEPARTMENT OF THE ARMY**

**APRIL 1977**



TECHNICAL MANUAL }  
No. 11-6625-441-34P }

HEADQUARTERS  
DEPARTMENT OF THE ARMY  
WASHINGTON, DC, 12 April 1977

**DIRECT SUPPORT AND GENERAL SUPPORT MAINTENANCE  
REPAIR PARTS AND SPECIAL TOOLS LISTS  
(INCLUDING DEPOT MAINTENANCE REPAIR PARTS AND SPECIAL TOOLS)  
FOR  
TEST SETS, RADIO  
TS-1588/AIC (NSN 6625-00-895-6646)  
AND  
TS-1588A/AIC (NSN 6625-00-239-6016)**

*Current as of 29 December 1976*

**REPORTING OF ERRORS**

You can improve this manual by recommending improvements using DA Form 2028-2 (Test) located in the back of the manual. Simply tear out the self-addressed form, fill it out as shown on the sample, fold it where shown, and drop it in the mail.

If there are no blank DA Forms 2028-2 (Test) in the back of your manual, use the standard DA Form 2028 (Recommended Changes to Publications and Blank Forms) and forward to the Commander, US Army Electronics Command, ATTN DRSEL-MA-Q, Fort Monmouth, New Jersey 07703.

In either case a reply will be furnished direct to you.

**Table of Contents**

		Page	Illus Fig
Section	I. Introduction .....	1	
	II. Repair parts list .....	5	
Group	00 Test Set, Radio TS-1588/AIC and TS-1588A/AIC .....	5	1-3
	01 Cable, power, electrical .....	11	3
	02 Cable assembly, power, electrical .....	12	3
Section	III. Special tools list (Not applicable)		
	IV. National stock number and part number index .....	13	

\*This manual supersedes TM 11-6625-441-34P, 17 July 1973.



# SECTION I INTRODUCTION

## 1. Scope

This manual lists spares and repair parts special tools; special test, measurement, and diagnostic equipment (TMDE), and other special support equipment required for performance of direct support and general support maintenance of the TS-1588/AIC and TS-1588A/AIC. It authorizes the requisitioning and issue of spares and repair parts as indicated by the source and maintenance codes.

## 2. General

This Repair Parts and Special Tools List is divided into the following sections

*a. Section II Repair Parts List.* A list of spares and repair parts authorized for use in the performance of maintenance. The list also includes parts which must be removed for replacement of the authorized parts. Parts lists are composed of functional groups in numeric sequence, with the parts in each group listed in figure and item number sequence.

*b. Section III Special Tools List.* Not applicable.

*c. Section IV. National Stock Number and Part Number Index.* A list, in National item identification number (NIIN) sequence, of all National stock numbers (NSN) appearing in the listings, followed by a list, in alphameric sequence, of all part numbers appearing in the listings. National stock numbers and part numbers are cross-referenced to each illustration figure and item number appearance.

## 3. Explanation of Columns

*a. Illustration* This column is divided as follows

(1) *Figure number.* Indicates the figure number of the illustration on which the item is shown.

(2) *Item number.* The number used to identify item called out in the illustration.

*b. Source, Maintenance, and Recoverability (SMR) codes.*

(1) *Source code.* Source codes indicate the manner of acquiring support items for maintenance, repair, or overhaul of end items. Source codes are entered in the first and second positions of the Uniform SMR Code format as follows

Code	Definition
PA	-Item procured and stocked for anticipated or known usage.
XD-A	support item that is not stocked. When required, item will be procured through normal supply channels.

### NOTE

Cannibalization or salvage maybe used as a source of supply for any items source coded above except those coded XA and aircraft support items as restricted by AR 700-42.

(2) *Maintenance code.* Maintenance codes are assigned to indicate the levels of maintenance authorized to USE and REPAIR support items. The maintenance codes are entered in the third and fourth positions of the Uniform SMR Code format as follows:

(a) The maintenance code entered in the third position will indicate the lowest maintenance level authorized to remove, replace, and use the support item. The maintenance code entered in the third position will indicate one of the following levels of maintenance

Code	Application/Explanation
0	-Support item is removed, replaced, used at the organizational level.
F	-Support item is removed, replaced, used at the direct support level.

(b) The maintenance code entered in the fourth position indicates whether the item is to be repaired and identifies the lowest maintenance level with the capability to perform complete repair (i.e., all authorized maintenance functions). This position will contain one of the following maintenance codes:

Code	Application/Explanation
F	-The lowest maintenance level capable of complete repair of the support item is the direct support level.
Z	-Nonreparable. No repair is authorized.

(3) *Recoverability code.* Recoverability codes are assigned to support items to indicate the disposition action on unserviceable items. The recoverability code is entered in the fifth position of the Uniform SMR Code format as follows:

Recoverability Codes	Definition
Z	-Nonreparable item. When unserviceable, condemn and dispose at the level indicated in position 3.
F	-Reparable item. When uneconomically reparable, condemn and dispose at the direct support level.

*c. National Stock Number.* Indicates the National stock number assigned to the item and will be used for requisitioning purposes.

*d. Part Number.* Indicates the primary number used by the manufacturer (individual, company, firm, corporation, or Government activity), which controls the design and characteristics of the item by means of its engineering drawings, specifications, standards, and inspection requirements to identify an item or range of items.

**NOTE**  
When a stock numbered item is requisitioned, the repair part received may have a different part number than the part being replaced,

e. *Federal Supply Code for Manufacturer (FSCM).* The FSCM is a 5-digit numeric code listed in SB 708-42 which is used to identify the manufacturer, distributor, or Government agency, etc.

f. *Description.* Indicates the Federal item name and, if required, a minimum description to identify the item.

g. *Unit of Measure (U/M).* Indicates the standard of the basic quantity of the listed item as used in performing the actual maintenance function. This measure is expressed by a two-character alphabetical abbreviation (e.g., ea, in, pr, etc). When the unit of measure differs from the unit of issue, the lowest unit of issue that will satisfy the required units of measure will be requisitioned.

h. *Quantity Incorporated in Unit.* Indicates the quantity of the item used in the breakout shown on the illustration figure, which is prepared for a functional group, subfunctional group, or an assembly.

**4. Special Information**

a. Usable on codes are shown in the description column. Uncoded items are applicable to all models. Identification of the usable on codes used in this publication are:

<i>Code</i>	<i>Used on</i>
4AK	TS-1588/AIC
AU9	TS-1588A/AIC

b. The following publications pertain to the TS-1588/AIC and TS-1588A/AIC and its components TM 11-6625-441-12, Teat Sets, Radio TS-1588/AIC and TS-1588A/AIC  
TM 11-6625-441-20P, Test Sets, Radio TS-1588/AIC and TS-1588A/AIC

TM 11-6625-441-34, Test Set, Radio TS-1588/AIC and Test Set, Radio TS-1588A/AIC

**5. How to Locate Repair Parts**

a. When National stock number or part number is unknown.

(1) *First.* Using the table of contents, determine the functional group within which the item belongs. This is necessary since illustrations are prepared for functional groups and listings are divided into the same groups.

(2) *Second.* Find the illustration covering the functional group to which the item belongs.

(3) *Third.* Identify the item on the illustration and note the illustration figure and item number of the item,

(4) *Fourth.* Using the Repair Parts Listing, find the figure and item number noted on the illustration.

b. When National stock number or part number is known.

(1) *First.* Using the Index of National Stock Numbers and Part Numbers, find the pertinent National stock number or part number. This index is in NIIN sequence followed by a list of part numbers in alphameric sequence, cross-referenced to the illustration figure number and item number.

(2) *Second.* After finding the figure and item number, locate the figure and item number in the repair parts list.

**6. Abbreviations**

Not applicable.

(Next printed page is 4)



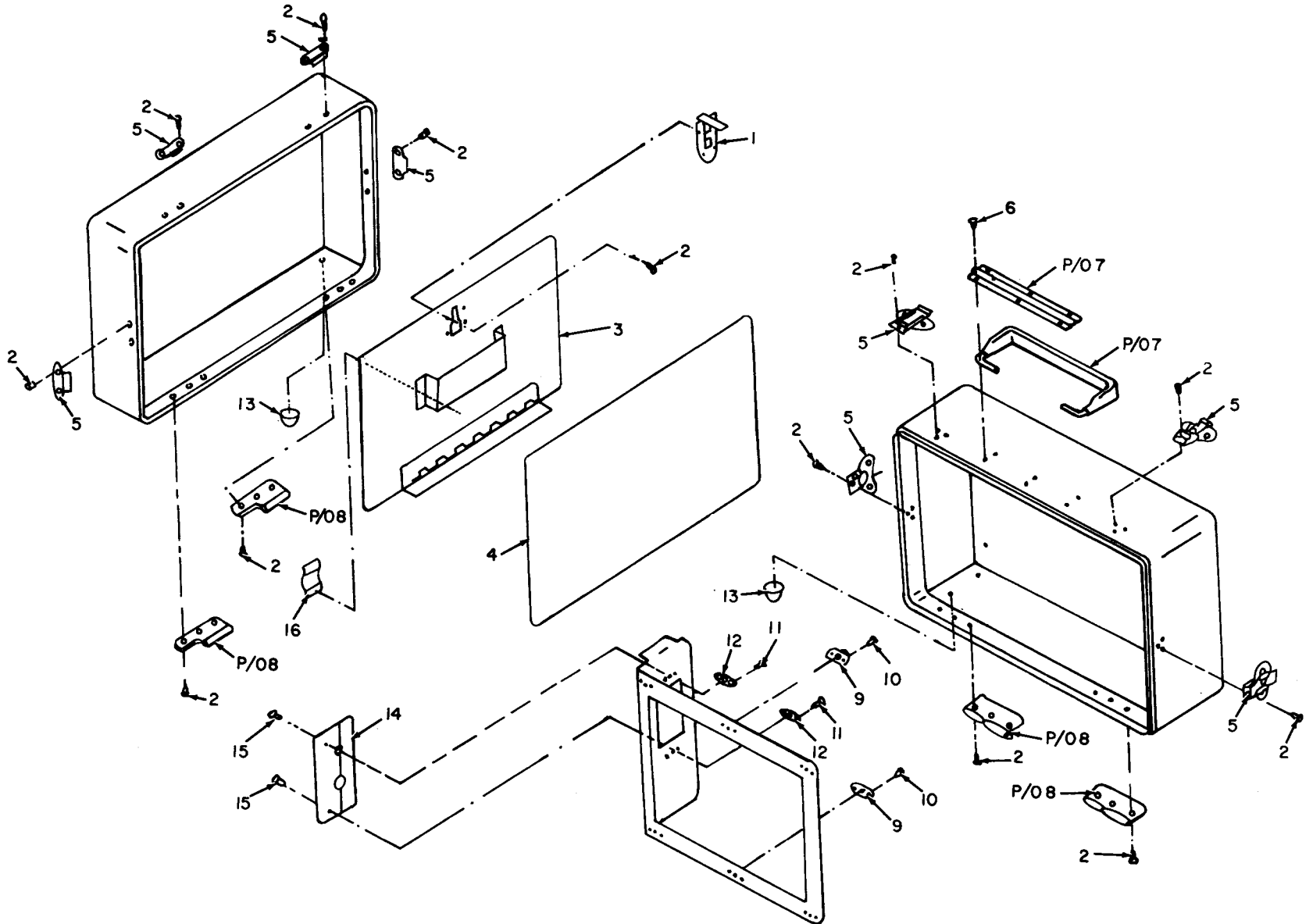
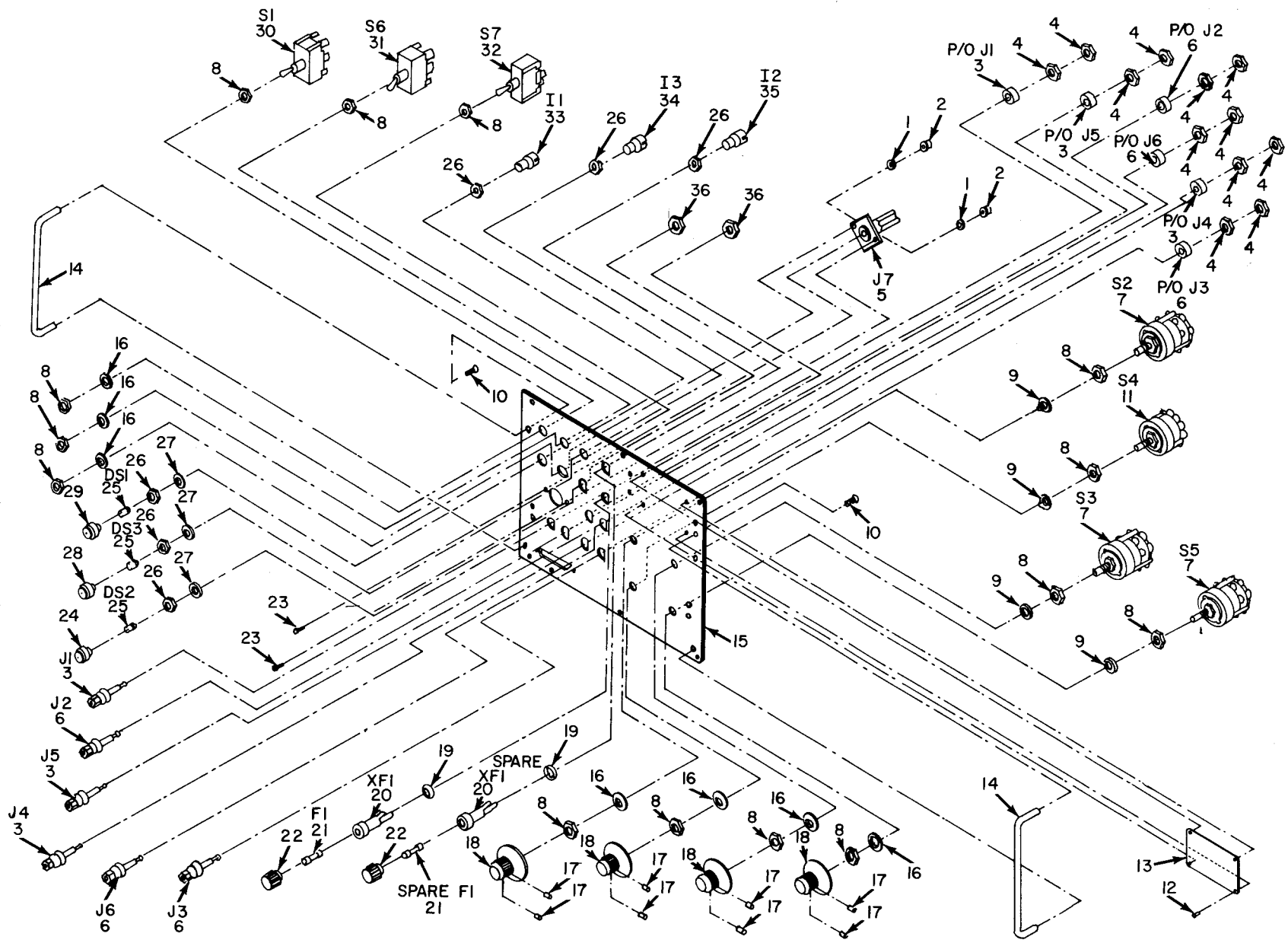


Figure 1. Test Sets, Radio TS-1588/AIC and TS-1588A/AIC, Case Assembly.

ELIKNOOI



SECTION II (1) ILLUSTRATION (A) (B) FIG ITEM NO NO		(2) SMR CODE	(3) NATIONAL STOCK NUMBER	(4) PART NUMBER	(5) FSCM	TM11-6625-441-34P (6) DESCRIPTION	USABLE ON CODE	(7) U/M	(8) QTY INC IN UNIT
						GROUP 00 TEST SET,RADIO TS-1588/ATC AND TS-1588A/ATC			
1	1	XDFZZ		4600C	83014	LATCH		EA	1
1	2	PAFZZ	5320-00-117-6828	MS20470AD4-6	96906	RIVET,SOLID		EA	20
1	3	XDFZZ		SMD374331	80063	COVER ASSEMBLY,RADIO TEST SET		EA	1
1	4	XDFZZ		65920-13	11357	SEAL,RUBBER	AU9	EA	1
1	5	PAFZZ	5340-00-801-1261	B1900-144	82240	LATCH		EA	4
1	6	PAFZZ	5320-00-117-6826	MS20470AD4-4	96906	RIVET,SOLID	AU9	EA	6
1	7	XDFZZ		5371G	98003	HANDLE,ALUMINUM,VINYL COVERED	AU9	EA	1
1	8	XDFZZ	5340-00-882-8242	H101	11357	HINGE,SLIDE	AU9	EA	2
1	9	XDFZZ		MF1000-08	15653	NUT,ANCHOR		EA	6
1	10	PAFZZ	5320-00-117-6939	AN426AD3-5	88044	RIVET,SOLID		EA	12
1	11	PAFZZ	5320-00-117-6939	MS20426AD3-5	96906	RIVET,SOLID		EA	4
1	12	PAFZZ	5310-00-777-5786	F5000-06BC	15653	NUT,ANCHOR		EA	2
1	13	XDFZZ		F16-10N	11357	FOOT,ALUMINUM	AU9	EA	6
1	14	XDFZZ		65920-7	11357	PLATE		EA	1
1	15	XDFZZ		NAS1352-06-6	80205	SCREW,CAPTIVE,SOCKET HEAD		EA	2
1	16	XDFZZ		C100	11357	CLIP,BOOK	AU9	EA	1
1	16	PAFZZ	5999-00-230-1212	48C	76545	CLIP,BOOK	4AK	EA	1



ELIKN002

Figure 2. Test Sets, Radio TS-1588/AIC and TS-1588A/AIC, Front Panel Assembly.

SECTION II		TM11-6625-441-34P								
(1)	(2)	(3)	(4)	(5)	(6)	(7)	(8)			
ILLUSTRATION										
(A)	(B)									
FIG	ITEM	SMR	NATIONAL	PART	DESCRIPTION	USABLE ON CODE	U/M			
NO	NO	CODE	STOCK	NUMBER	FSCM					
			NUMBER							
2	1	PAFZZ	5310-00-187-2397	AN960D4L	88044	WASHER, FLAT	AU9	EA	2	
2	2	PAFZZ	5310-00-811-6419	MS21042-04	96906	NUT, SELF LOCKING	AU9	EA	2	
2	3	XDFZZ		SMD374339	80063	POST, BINDING, RED		EA	3	
2	4	PAFZZ	5310-00-638-9630	AN316C4L	88044	NUT, HEXAGON MOUNTING		EA	12	
2	5	XDFZZ	5935-00-578-9622	SMD374341	80063	JACK, TIP	AU9	EA	1	
2	5	XDFZZ		AIC10	72364	JACK, TIP	4AK	EA	1	
2	6	XDFZZ	5940-00-269-2219	SMD374337	80063	POST, BINDING, BLACK		EA	3	
2	7	XDFZZ		SMD317132	80063	SWITCH, ROTARY	AU9	EA	3	
2	7	XDFZZ		200-1	71590	SWITCH, ROTARY	4AK	EA	3	
2	8	XDFZZ		MS25082-7	96906	NUT, HEXAGON MOUNTING		EA	14	
2	9	PAFZZ	5310-00-924-5968	MS25081-1	96906	RING, LOCKING		EA	4	
2	10	PAFZZ	5305-00-959-4158	MS24693C273	96906	SCREW, MACHINE, FLAT COUNTERSUNK		EA	4	
2	11	XDFZZ		SMD317133	80063	SWITCH, ROTARY	AU9	EA	1	
2	11	PAFZZ	5930-00-823-0025	PA2043	71590	SWITCH, ROTARY	4AK	EA	1	
2	12	PAFZZ	5320-00-582-3305	MS20600AD4W3	96906	RIVET, SOLID		EA	4	
2	13	XDFZZ		MPD13379	80063	NAMEPLATE, RADIO TEST SET		EA	1	
2	14	PAFZZ	5340-00-984-8854	MS39087-1	96906	HANDLE		EA	2	
2	15	XDFZZ		SME374325	80063	PANEL ASSEMBLY, RADIO TEST SET		EA	7	
2	16	PAFZZ	5310-00-595-7237	AN936A616	88044	WASHER, LOCK		EA	7	
2	17	PAOZZ	5305-00-719-5342	MS51017-34	96906	SETSCREW, HEXAGON		EA	8	
2	18	PAOZZ	5355-00-579-6390	MS91528-2F2B	96906	KNOB, CONTROL	AU9	EA	4	
2	18	PAOZZ	5355-00-579-6390	9032	99687	KNOB, CONTROL	4AK	EA	4	
2	19	PAFZZ	5310-00-240-7679	905-16	75915	WASHER, LOCK		EA	2	
2	20	PAFZZ	5920-00-875-4100	FHN26G2	81349	FUSEHOLDER	AU9	EA	2	
2	20	XDFZZ		SCB2703	80063	FUSEHOLDER	4AK	EA	2	
2	21	XDOZZ		F02B250V1A	75915	FUSE, CARTRIDGE	AU9	EA	2	
2	21	PAOZZ	5920-00-284-9220	F02G1R00B	81349	FUSE, CARTRIDGE	4AK	EA	2	
2	22	XDOZZ		342024-020	75915	CAP, FUSEHOLDER		EA	2	
2	23	PAFZZ	5305-00-056-9961	MS24693C4	96906	SCREW, MACHINE, FLAT COUNTERSUNK	AU9	EA	2	
2	24	PAFZZ	6210-00-809-6601	134-0351-200	72619	LENS, LIGHT INDICATOR, RED	AU9	EA	1	
2	24	PAFZZ	6210-00-583-9349	MS25041-5	96906	LENS, LIGHT INDICATOR, RED	4AK	EA	1	
2	25	PAOZZ	6240-00-155-7836	MS25237-327	96906	LAMP, INCANDESCENT, SINGLE CONTROL	AU9	EA	3	
2	25	PAOZZ	6240-00-155-7836	327	24446	LAMP, INCANDESCENT	4AK	EA	3	
2	26	XDFZZ	5310-00-616-2973	MS25082-8	96906	NUT, HEXAGON MOUNTING		EA	6	
2	27	PAFZZ	5310-00-194-1483	MS35333-44	96906	WASHER, LOCK		EA	3	
2	28	XDOZZ		134-0375-200	72619	LENS, LIGHT INDICATOR, CLEAR	AU9	EA	1	
2	28	PAOZZ	6210-00-553-1076	MS25041-7	96906	LENS, LIGHT INDICATOR, CLEAR	4AK	EA	1	
2	29	XDOZZ		134-0352-200	72619	LENS, LIGHT INDICATOR, GREEN	AU9	EA	1	
2	29	PAOZZ	6210-00-519-0448	MS25041-6	96906	LENS, LIGHT INDICATOR, GREEN	4AK	EA	1	
2	30	PAFZZ	5930-00-615-7882	MS35059-27	96906	SWITCH, TOGGLE	AU9	EA	1	

SECTION II		TM11-6625-441-34P							
(1)	(2)	(3)	(4)	(5)	(6)		(7)	(8)	
ILLUSTRATION									
(A)	(B)		NATIONAL		DESCRIPTION			QTY	
FIG	ITEM	SMR	STOCK	PART		USABLE ON CODE	U/M	INC	
NO	NO	CODE	NUMBER	NUMBER	FSCM			IN	
								UNIT	
2	30	PAFZZ	5930-00-615-7882	MS35059-27	96906	SWITCH, TOGGLE	4AK	EA	1
2	31	PAFZZ	5930-00-615-7880	MS35059-26	96906	SWITCH, TOGGLE		EA	1
2	32	PAFZZ	5930-00-655-1516	MS35058-24	96906	SWITCH, TOGGLE	AU9	EA	1
2	32	PAFZZ	5930-00-655-1516	AN3021-10	88044	SWITCH, TOGGLE	4AK	EA	1
2	33	PAFZZ	6210-00-553-1076	MS25041-7	96906	LIGHT, INDICATOR, PRESS TO TEST		EA	1
2	34	PAFZZ	6210-00-583-9349	MS25041-5	96906	LIGHT, INDICATOR, PRESS TO TEST		EA	1
2	35	PAFZZ	6210-00-519-0448	MS25041-6	96906	LIGHT, INDICATOR, PRESS TO TEST		EA	1
2	36	PAFZZ	5310-00-175-3491	903-41	75915	NUT, HEXAGON MOUNTING		EA	2



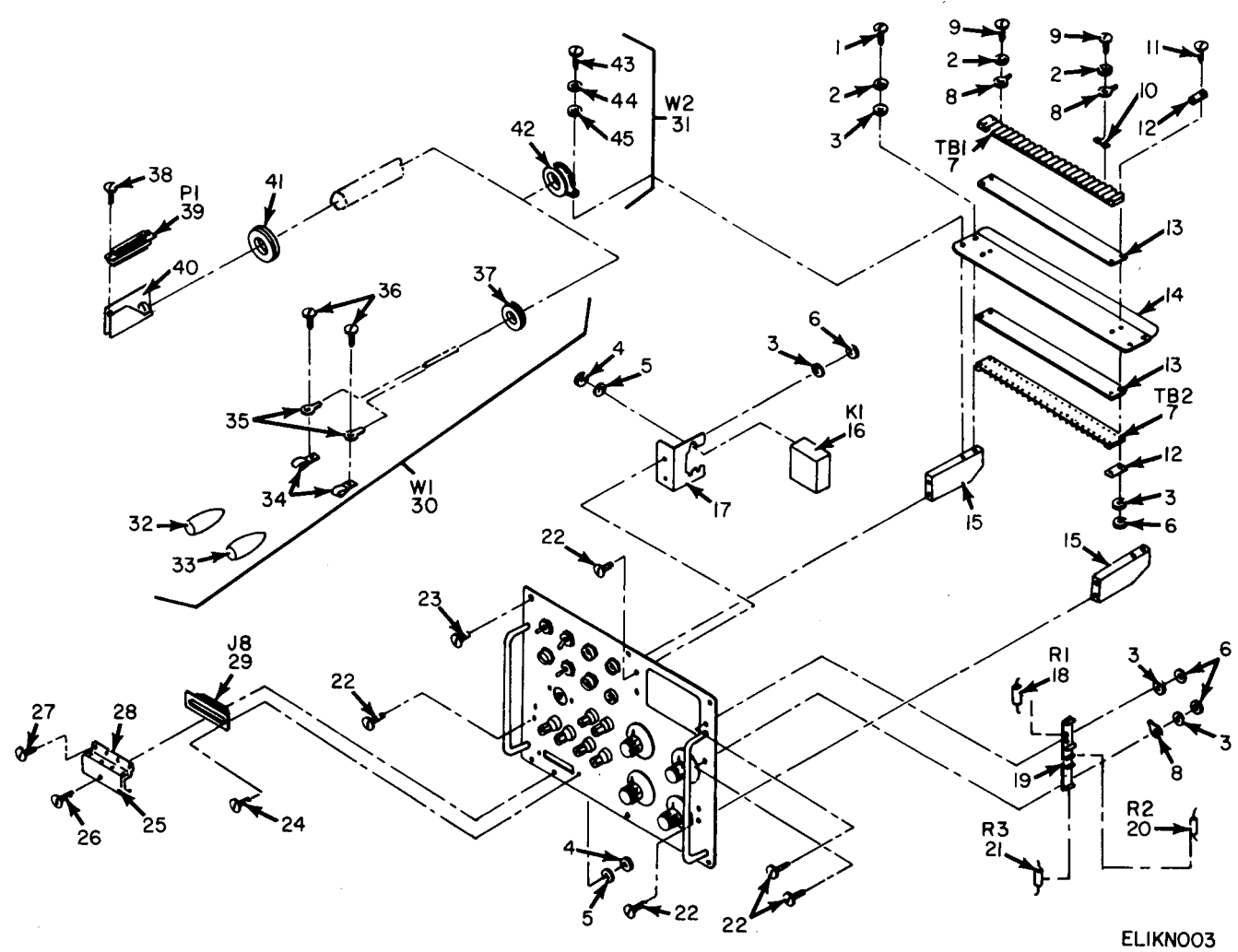


Figure 3. Test Set, Radio TS-1588/AIC and TS-1588A/AIC; Cable, Power Electrical JC580 TYPEJO (81348); and Cable Assembly, Power, Electrical SME374333 (80063).

SECTION II (1) ILLUSTRATION		(2)	(3)	(4)	(5)	TM11-6625-441-34P (6)	(7)	(8)
(A) FIG NO	(B) ITEM NO	SMR CODE	NATIONAL STOCK NUMBER	PART NUMBER	FSCM	DESCRIPTION	USABLE ON CODE	U/M INC IN UNIT
3	1	PAFZZ	5305-00-984-4989	MS35206-229	96906	SCREW,MACHINE,PAN HEAD		EA 4
3	2	PAFZZ	5310-00-579-0079	MS35333-37	96906	WASHER,LOCK		EA 84
3	3	PAFZZ	5310-00-187-2398	AN960PD6L	88044	WASHER,FLAT		EA 12
3	4	PAFZZ	5310-00-811-6419	MS21042-04	96906	NUT,SELF LOCKING		EA 4
3	5	PAFZZ	5310-00-187-2397	AN960D4L	88044	WASHER,FLAT		EA 4
3	6	PAFZZ	5310-00-807-1465	MS21042-06	96906	NUT,SELF LOCKING		EA 8
3	7	XDFZZ		SMD374347	80063	TERMINAL BOARD		EA 2
3	8	PAFZZ	5940-00-813-0698	MS25036-101	96906	TERMINAL,LUG,CRIMP STYLE		EA 66
3	9	PAFZZ	5305-00-840-5937	MS24693A28	96906	SCREW,BINDING HEAD		EA 80
3	10	XDFZZ		SMD374342	80063	LINK,TERMINAL		EA 5
3	11	PAFZZ	5305-00-984-6221	MS35206-234	96906	SCREW,MACHINE,PAN HEAD		EA 4
3	12	XDFZZ		SMD374343	80063	PLATE,MOUNTING		EA 4
3	13	XDFZZ		SMD317131	80063	STRIP,MARKER		EA 2
3	14	XDFZZ		SMD374327	80063	ANGLE		EA 1
3	15	XDFZZ		SMD374328	80063	BLOCK		EA 2
3	16	PAFZZ	5945-00-577-2206	MS25917-1	96906	RELAY,ARMATURE		EA 1
3	17	XDFZZ		SMD374326	80063	BRACKET		EA 1
3	18	PAFZZ	5905-00-190-8867	RC42GF512J	81349	RESISTOR,FIXED,COMPOSITION	AU9	EA 1
3	18	PAFZZ		2W5K	00656	RESISTOR,FIXED,COMPOSITION	4AK	EA 1
3	19	PAFZZ	5940-00-036-5167	SMD317130	80063	TERMINAL STRIP		EA 1
3	20	XDFZZ	5905-00-412-0551	SMD374344	80063	RESISTOR,FIXED,COMPOSITION	AU9	EA 1
3	20	XDFZZ		2W5	00656	RESISTOR,FIXED,COMPOSITION	4AK	EA 1
3	21	PAFZZ	5905-00-171-1975	RC42GF151J	81349	RESISTOR,FIXED,COMPOSITION	AU9	EA 1
3	21	XDFZZ		2W150	00656	RESISTOR,FIXED,COMPOSITION	4AK	EA 1
3	22	PAFZZ	5305-00-066-7327	MS24693C28	96906	SCREW,MACHINE,FLAT COUNTERSUNK		EA 8
3	23	PAFZZ	5305-00-984-6193	MS35206-245	96906	SCREW,MACHINE,PAN HEAD		EA 6
3	24	PAFZZ	5305-00-889-2998	MS35206-216	96906	SCREW,MACHINE,PAN HEAD		EA 2
3	25	XDFZZ		SMD374330	80063	CHANNEL		EA 1
3	26	XDFZZ		SMD374329	80063	SCREW,SPECIAL		EA 1
3	27	PAFZZ	5320-00-117-6939	MS20426AD3-5	96906	RIVET,SOLID	AU9	EA 8
3	28	XDFZZ		MS20001H3-300	96906	HINGE,HALF 5		EA 1
3	29	XDFZZ	5935-00-280-2268	SMD374335	80063	CONNECTOR,PLUG,ELECTRICAL	AU9	EA 1
3	29	PAFZZ	5935-00-280-2268	DC37P	31746	CONNECTOR,RECEPTACLE,ELECTRICAL	4AK	EA 1
3	30	XDFFF		SMD374332	80063	CABLE ASSEMBLY,POWER,ELECTRICAL		EA 1
3	31	XDFFF		SMD374333	80063	CABLE ASSEMBLY,POWER,ELECTRICAL		EA 1
						GROUP 01 CABLE,POWER ELECTRICAL JC580		
						TYPEJO (81348)		
3	32	XDFZZ	5975-00-383-1318	SMD374346	80063	INSULATOR,RED		EA 1
3	33	XDFZZ	5975-00-281-0046	SMD374345	80063	INSULATOR,BLACK		EA 1

SECTION II		TM11-6625-441-34P						
(1)	(2)	(3)	(4)	(5)	(6)	(7)	(8)	
ILLUSTRATION							QTY	
(A)	(B)	NATIONAL			DESCRIPTION		INC	
FIG	ITEM	STOCK	PART	FSCM		USABLE ON CODE	IN	
NO	NO	NUMBER	NUMBER				UNIT	
3	34	PAFZZ	5999-00-230-1212	48C	76545	CLIP, ELECTRICAL	EA	2
3	35	PAFZZ	5940-00-283-5280	MS25036-106	96906	TERMINAL, LUG, CRIMP STYLE	EA	2
3	36	PAFZZ	5305-00-066-7327	MS24693C28	96906	SCREW, MACHINE, FLAT COUNTERSUNK	AU9	EA
3	37	PAFZZ	5325-00-185-0004	MS35489-40	96906	GROMMET, RUBBER	EA	1
GROUP 02 CABLE ASSEMBLY, POWER, ELECTRICAL								
SME374333 (80063)								
3	38	PAFZZ	5305-00-056-9961	MS24693C4	96906	SCREW, MACHINE, FLAT COUNTERSUNK	EA	4
3	39	XDFZZ		SMD374336	80063	CONNECTOR, PLUG, ELECTRICAL	AU9	EA
3	39	PAFZZ	5935-00-280-2268	DC37C	31746	CONNECTOR, RECEPTACLE, ELECTRICAL	4AK	EA
3	40	XDFZZ	5935-00-788-2317	SMD374340	80063	HOOD, CONNECTOR	AU9	EA
3	40	PAFZZ	5935-00-795-3781	DCJC	31746	SHELL, CONNECTOR	4AK	EA
3	41	PAFZZ	5325-00-185-0001	MS35489-46S	96906	GROMMET, RUBBER	EA	1
3	42	PAFZZ	5340-00-286-9418	MS21919WDG16	96906	CLAMP, CUSHIONED SUPPORT	EA	1
3	43	PAFZZ	5305-00-984-4989	MS35206-229	96906	SCREW, MACHINE, PAN HEAD	AU9	EA
3	44	PAFZZ	5310-00-187-2398	AN960PD6L	88044	WASHER, FLAT	AU9	EA
3	45	PAFZZ	5310-00-579-0079	MS35333-37	96906	WASHER, LOCK	AU9	EA



NOTE: LATEST NATIONAL STOCK NUMBER AND PART NUMBER ASSIGNMENTS ARE INCLUDED AT END OF INDEX.

STOCK NUMBER	FIGURE NO	ITEM NO	STOCK NUMBER	FIGURE NO	ITEM NO
5940-00-036-5167	3	19	6210-00-519-0448	2	35
5305-00-056-9961	2	23	6210-00-553-1076	2	28
5305-00-056-9961	3	38	6210-00-553-1076	2	33
5305-00-066-7327	3	22	5945-00-577-2206	3	16
5305-00-066-7327	3	36	5945-00-577-2206	3	16
5320-00-117-6826	1	6	5310-00-579-0079	3	2
5320-00-117-6828	1	2	5310-00-579-0079	3	45
5320-00-117-6939	1	10	5355-00-579-6390	2	18
5320-00-117-6939	1	11	5355-00-579-6390	2	18
5320-00-117-6939	3	27	5320-00-582-3305	2	12
6240-00-155-7836	2	25	5310-00-595-7237	2	16
6240-00-155-7836	2	25	5930-00-615-7880	2	31
5905-00-171-1975	3	21			
5310-00-175-3491	2	36	5930-00-615-7882	2	30
5325-00-185-0004	3	37	5930-00-655-1516	2	32
5310-00-187-2397	3	5	5935-00-795-3781	3	40
5905-00-190-8867	3	18	5340-00-801-1261	1	5
5310-00-194-1483	2	27	5310-00-807-1465	3	6
5999-00-230-1212	1	16	6210-00-809-6601	2	24
5999-00-230-1212	3	34	5310-00-811-6419	2	2
5310-00-240-7679	2	19	5310-00-811-6419	3	4
5935-00-280-2268	3	29	5940-00-813-0698	3	8
5935-00-280-2268	3	39	5930-00-823-0025	2	11
5940-00-283-5280	3	35	5305-00-840-5937	3	9
5920-00-284-9220	2	21	5310-00-924-5968	2	9
5340-00-286-9418	3	42	5305-00-959-4158	2	10
6210-00-519-0448	2	29	5340-00-984-8854	2	14

PART NUMBER	FSCM	FIG NO	ITEM NO	PART NUMBER	FSCM	FIG NO	ITEM NO
AIC10	72364	2	5	MS25082-8	96906	2	26
AN3021-10	88044	2	32	MS25237-327	96906	2	25
				MS25917-1	96906	3	16
AN426AD3-5	88044	1	10				
AN936A616	88044	2	16	MS35058-24	96906	2	32
				MS35059-26	96906	2	31
AN960D4L	88044	3	5				
				MS35059-27	96906	2	30
B1900-144	82240	1	5				
C100	11357	1	16				
CCJC	31746	3	40				
DC37C	31746	3	39				
DC37P	31746	3	29				
FHN26G2	81349	2	20	MS35333-37	96906	3	2
V02B250V1A	75915	2	21	MS35333-37	96906	3	45
F02GR00B	81349	2	21	MS35333-44	96906	2	27
F16-10N	11357	1	13	MS35489-40	96906	3	37
H101	11357	1	8	MS39087-1	96906	2	14
MP1000-08	15653	1	9	MS51017-34	96906	2	17
MPD13379	80063	2	13	MS91528-2F2B	96906	2	18
MS20001H3-300	96906	3	28	NAS1352-06-6	80205	1	15
MS20426AD3-5	96906	1	11	PA2043	71590	2	11
MS20426AD3-5	96906	3	27	RC42GF151J	81349	3	21
MS20470AD4-4	96906	1	6	RC42GF512J	81349	3	18
MS20470AD4-6	96906	1	2	SCB2703	80063	2	20
MS20600AD4W3	96906	2	12	SMD317130	80063	3	19
MS21042-04	96906	2	2	SMD317131	80063	3	13
MS21042-04	96906	3	4	SMD317132	80063	2	7
MS21042-06	96906	3	6	SMD317133	80063	2	11
MS21919WDG16	96906	3	42	SMD374326	80063	3	17
MS24693A28	96906	3	9	SMD374327	80063	3	14
MS24693C273	96906	2	10	SMD374328	80063	3	15
MS24693C28	96906	3	22	SMD374329	80063	3	26
MS24693C28	96906	3	36	SMD374330	80063	3	25
MS24693C4	96906	2	23	SMD374331	80063	1	3
MS24693C4	96906	3	38	SMD374332	80063	3	30
MS25036-101	96906	3	8	SMD374335	80063	3	29
MS25036-106	96906	3	35	SMD374336	80063	3	39
MS25041-5	96906	2	24	SMD374337	80063	2	6
MS25041-5	96906	2	34	SMD374339	80063	2	3
MS25041-6	96906	2	29	SMD374340	80063	3	40
MS25041-6	96906	2	35	SMD374341	80063	2	5
MS25041-7	96906	2	28	SMD374342	80063	3	10
MS25041-7	96906	2	33	SMD374343	80063	3	12
MS25081-1	96906	2	9	SMD374344	80063	3	20
MS25082-7	96906	2	8	SMD374345	80063	3	33

PART NUMBER	FSCM	FIG NO	ITEM NO	PART NUMBER	FSCM	FIG NO	ITEM NO
SMD374346	80063	3	32	327	24446	2	25
SMD374347	80063	3	7	342024-020	75915	2	22
SME374325	80063	2	15	4600C	83014	1	1
SME374333	80063	3	31	48C	76545	1	16
134-0351-200	72619	2	24	48C	76545	3	34
134-0352-200	72619	2	29	5371G	98003	1	7
134-0375-200	72619	2	28	65920-13	11357	1	4
2W150	00656	3	21	65920-7	11357	1	14
2W5	00656	3	20	903-41	75915	2	36
2W5K	00656	3	18	9032	99687	2	18
200-1	71590	2	7	905-16	75915	2	19

## LATEST NATIONAL STOCK NUMBER ASSIGNMENTS

STOCK NUMBER	FIG. NO.	ITEM NO.
5325-00-185-0001	3	41
5310-00-187-2397	2	1
5310-00-187-2398	3	3
5310-00-187-2398	3	44
6210-00-583-9349	2	24
6210-00-583-9349	2	34
5930-00-615-7882	2	30
5310-00-638-9630	2	4
5930-00-655-1516	2	32
5305-00-719-5342	2	17
5310-00-777-5786	1	12
5920-00-875-4100	2	20
5305-00-889-2998	3	24
5305-00-984-4989	3	1
5305-00-984-4989	3	43
5305-00-984-6193	3	23
5305-00-984-6221	3	11

## LATEST PART NUMBER ASSIGNMENTS

PART NUMBER	FSCM	FIG. NO.	ITEM NO.
AN316C4L	88044	2	4
AN960D4L	88044	2	1
AN960PD6L	88044	3	3
AN960PD6L	88044	3	44
F5000-06BC	15653	1	12
MS35059-27	96906	2	30
MS35206-216	96906	3	24
MS35206-229	96906	3	1
MS35206-229	96906	3	43
MS35206-234	96906	3	11
MS35206-245	96906	3	23
MS35489-46S	96906	3	41

## ADDITIONAL LATEST NATIONAL STOCK NUMBER ASSIGNMENTS

STOCK NUMBER	FIGURE NO.	ITEM NO.
5940-00-269-2219	2	6
5935-00-280-2268	3	29
5975-00-281-0046	3	33
5975-00-383-1318	3	32
5905-00-412-0551	3	20
5935-00-578-9622	2	5
5310-00-616-2973	2	26
5935-00-788-2317	3	40
5340-00-882-8242	1	8

By Order of the Secretary of the Army

BERNARD W. ROGERS  
*General, United States Army*  
*Chief of staff*

Official: PAUL T. SMITH  
*Major General, United States Army*  
*The Adjutant General*

DISTRIBUTION

To be distributed in accordance with DA Form 12-36A, Direct and General Support Maintenance requirements for TS-1588( )/AIC.

RECOMMENDED CHANGES TO EQUIPMENT TECHNICAL PUBLICATIONS



THEN...JOT DOWN THE DOPE ABOUT IT ON THIS FORM. CAREFULLY TEAR IT OUT, FOLD IT AND DROP IT IN THE MAIL.

SOMETHING WRONG WITH PUBLICATION

FROM: (PRINT YOUR UNIT'S COMPLETE ADDRESS)

DATE SENT

PUBLICATION NUMBER

PUBLICATION DATE

PUBLICATION TITLE

BE EXACT PIN-POINT WHERE IT IS

PAGE NO.

PARA-GRAPH

FIGURE NO.

TABLE NO.

IN THIS SPACE, TELL WHAT IS WRONG AND WHAT SHOULD BE DONE ABOUT IT.

TEAR ALONG PERFORATED LINE

PRINTED NAME, GRADE OR TITLE AND TELEPHONE NUMBER

SIGN HERE

023296-000